



Social enterprises – EU Policy context

Dana Verbal
European Commission
DG Employment, Social Affairs and Inclusion
Unit E.1 Job Creation

Varna, 14 June 2018

Social enterprises can contribute to EU's social policy objectives

- *inclusive job creation*
- *better social cohesion*
- *fight against poverty and discrimination*
- *more entrepreneurial, more inclusive and more sustainable economy*
- *sustainability of welfare systems*

CURRENTLY ON THE EU AGENDA:

EUROPEAN PILLAR OF SOCIAL RIGHTS

Equal opportunities and access to the labour market

- Education, training and life-long learning
- Gender equality
- Equal opportunities
- Active support to employment

Fair working conditions

- Secure and adaptable employment
- Wages
- Information about employment conditions and protection in case of dismissals
- Social dialogue and involvement of workers
- Work-life balance
- Healthy, safe and well-adapted work environment

Adequate and sustainable social protection

- Childcare and support to children
- Social Protection
- Unemployment benefits
- Minimum income
- Old age income and pensions
- Health care
- Inclusion of people with disabilities
- Long-term care
- Housing and assistance for the homeless
- Access to essential services

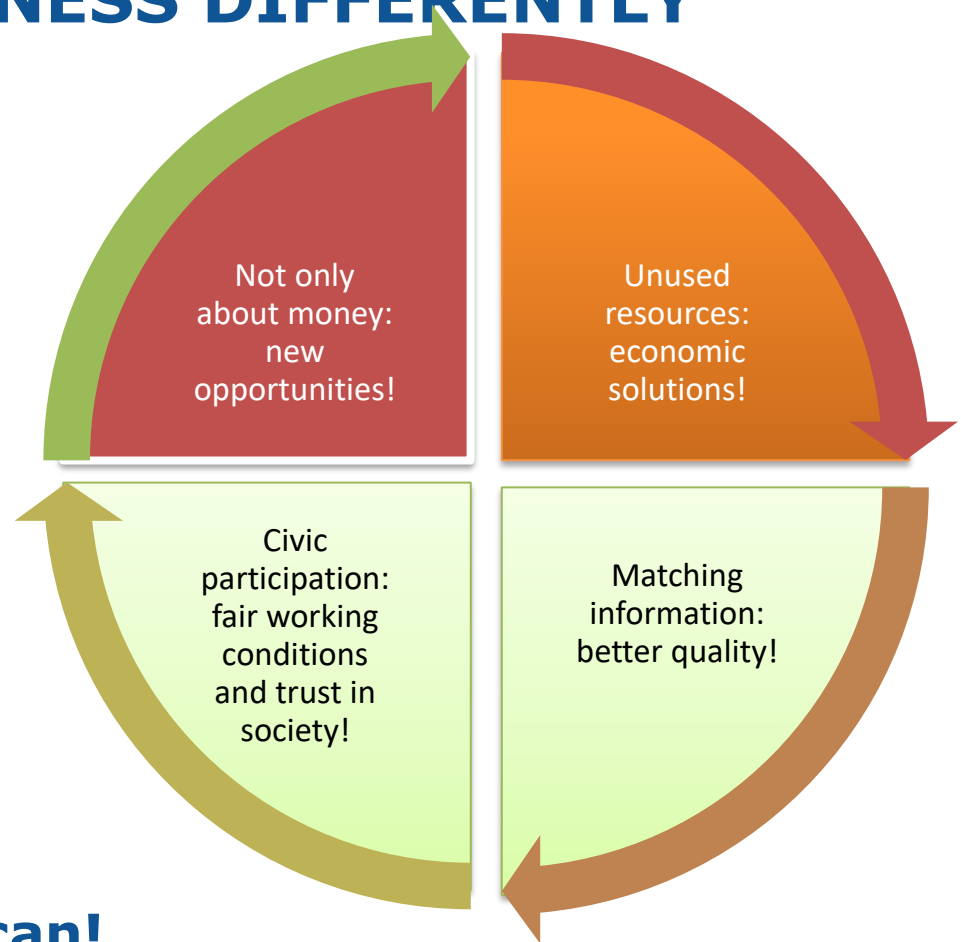
EFFICIENCY OF SOCIAL ECONOMY: DOING BUSINESS DIFFERENTLY

Can it deliver what others cannot?

Can it deliver for better price?

Can it deliver better quality?

Can it deliver broader impact?



Yes it can!

The Social Business Initiative 2011: an agenda with three focus areas

Visibility and recognition

- Mapping the realities in 28 EU Member States + CH
- Mainstreaming the issue in EU programmes

Finance

EaSI funding programme with specific social enterprise facility
ESF investment priority
EUSEF regulation on social enterprise funds

Regulatory environment

- Public procurement
- State aid
- Policy guidance on favourable framework conditions

Recognition and commitment by this Commission

Start-up and Scale-up initiative

- New measures as of 2017 on:
 - access to finance,
 - access to markets
 - framework conditions,
 - new technologies and business models,
 - international agenda.

EFSI, Social impact instruments

- Building social finance markets



European
Commission

A map of social enterprises and their eco-systems in Europe



Employment,
Social Affairs
and Inclusion

Social enterprise mapping

The SBI in 2011: need to know the landscape and potential in Europe.

2013- 2014: 28 EU + CH first ever comparative EU picture

2016: Update IT, BE, FR, ES, IE, SK, PL

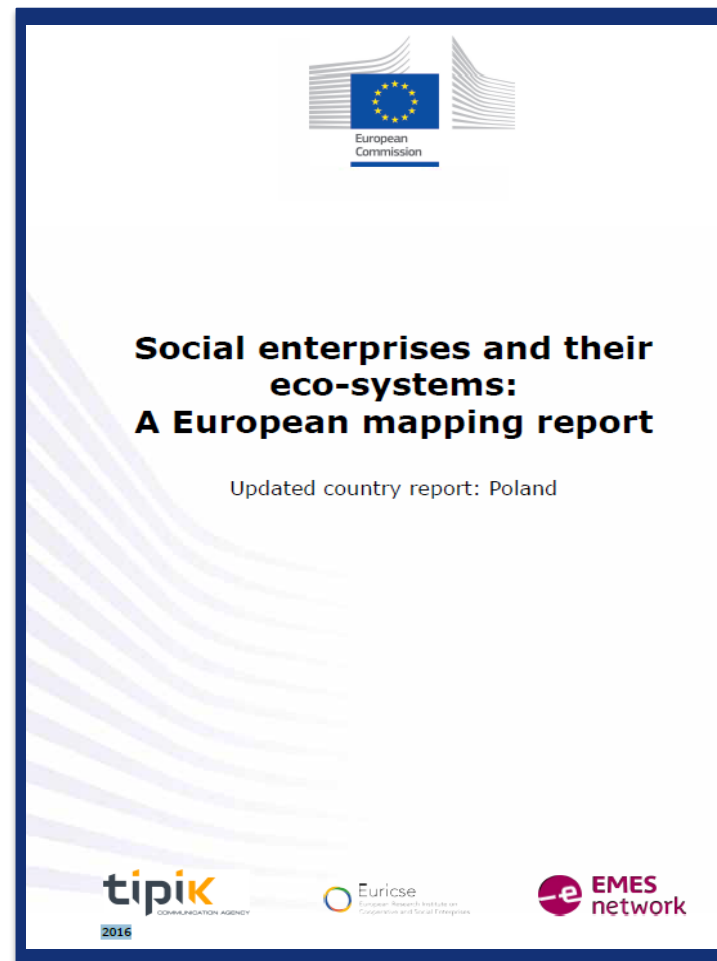
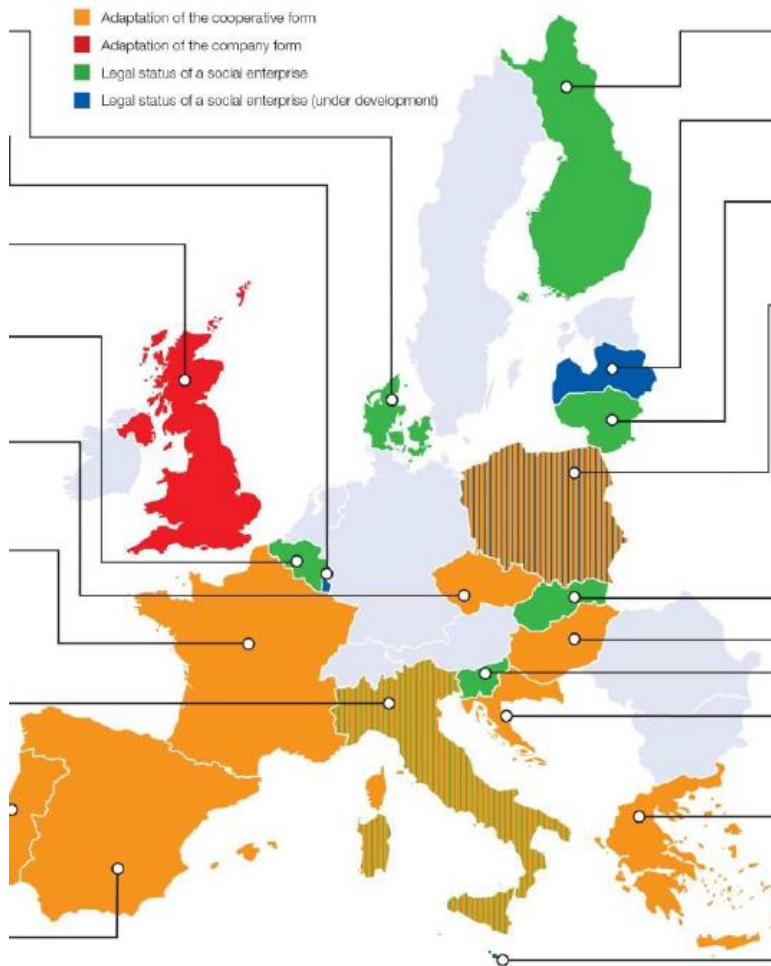
2018-2019: Update remaining 21 EU Country reports + 6 non-EU country fiches (FYROM, Iceland, Montenegro, Norway, Serbia, Turkey)

Employment,
Social Affairs
and Inclusion



European Commission

Mapping in Europe: An overview based on in-depth country reports



Social enterprise mapping: Trends and challenges

Trends:

- Growing demand for general interest services
- Increase in number and expansion of social enterprises in new fields of engagement
- Growing use of the term social enterprise and trend towards legal recognition
- Increasing awareness of and demand for a more ethical business

Challenges:

- Conceptual clarity
- Potential of cooperatives
- Relations with public authorities
- Public support schemes and EU funding
- Legislation
- Management skills



Cooperation with the OECD

Policy briefs:

- Social Entrepreneurship, Social impact measurement for SE, Scaling the impact of SE

In-depth country reviews:

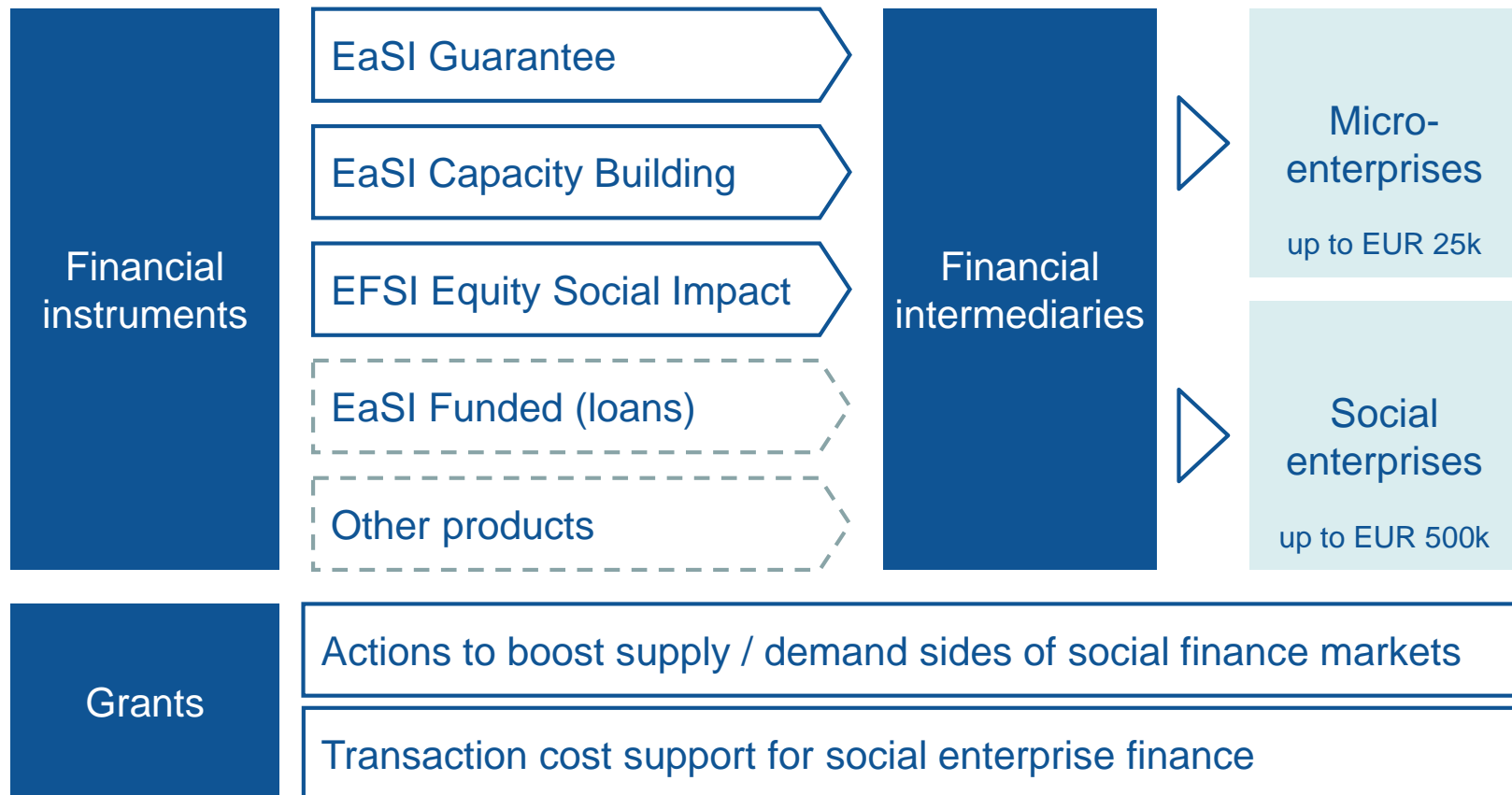
- 2015-2016: Croatia and Czech Republic
- 2018-2019: Sweden, Lithuania, the Netherlands and _____

Compendium of good practices

Better entrepreneurship tool: October 2018

Resources: <http://www.oecd.org/cfe/leed/social-entrepreneurship-oecd-ec.htm>

Actions to improve access to finance under the Employment and Social Innovation Programme (EaSI) and the European Fund for Strategic Investments (EFSI)



In the pipeline: Programmes within the next multiannual financial framework

- *Building on the past experience*
- *Synergies and stronger leverage*
- *Social enterprises and impact investment visible in the picture.*